

Farm 169

Sample Lemon Octane

Strain

0.06%	21.46%	27.39%
$\Delta 9$ THC	Total CBD	Total Cannabinoids
Not tested	Pass	273.9
Water Activity	6.81	mg / g Total Cannabinoids
	Moisture	



Sample ID

22100790434

Matrix

Flower

Metric

Harvest/Prod Date

Report Created

10/6/2022

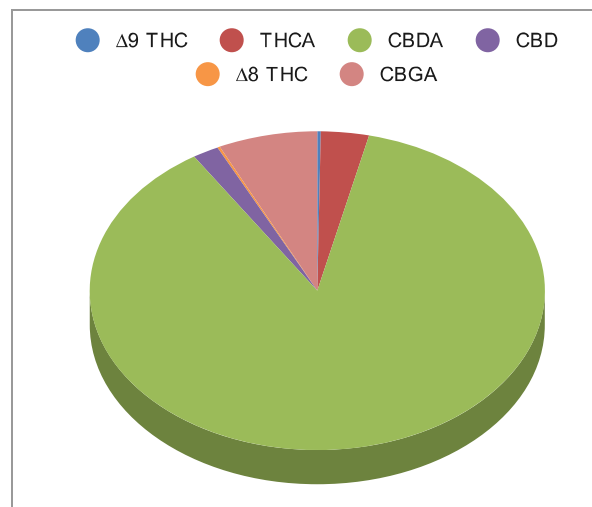
Results Valid Until

10/6/2023

Sample Extracted
10/5/2022 10:15


Sample Analyzed
10/5/2022 15:38

Cannabinoids	%Weight	mg/ gram	LOQ(% /w)
$\Delta 9$ THC	0.06	0.6	0.06
THCA	0.94	9.4	0.06
Total THC (THCA*0.877)+9THC	0.89	8.9	0.11
CBDA	23.89	238.9	0.06
CBD	0.51	5.1	0.06
CBN	<LOQ	<LOQ)	0.06
$\Delta 8$ THC	<LOQ	<LOQ)	0.06
‡ CBC	<LOQ	<LOQ)	0.06
‡ CBGA	1.93	19.3	0.06
‡ CBG	<LOQ	<LOQ)	0.06
‡ CBDV	<LOQ	<LOQ)	0.06
‡ CBDVA	<LOQ	<LOQ)	0.06
‡ THCVA	<LOQ	<LOQ)	0.06
‡ CBDQ	<LOQ	<LOQ)	0.06



Total THC and Total CBD are calculated values per OAR 333-064-0100. Cannabinoid values for plant matter samples are reported on a dry weight basis. Water activity action level is 0.65Aw. LOQ= Limit of Quantitation. NR=Not Reported.

Rogue Research Lab LLC
218 E. Main Street, Rogue River, OR 97537
Tel. 541-582-1962
ORELAP 4107 OLCC 101050708B
rogue-research-lab.com


Craig Berry - Lab Director
10/6/22



ROGUE RESEARCH LAB

Results pertain to submitted samples only. Rogue Research Lab LLC makes no claims as to the consumer safety or other risks associated with any detected or non-detected amounts of any pesticides, solvents or other adulterants. This report shall not be reproduced, unless in its entirety, without written approval from Rogue Research Lab LLC. Samples were received in good condition and all QC samples met acceptance criteria of the method; data available upon request. Analytes accompanied by dagger (‡) are not within the scope of accreditation and are for informational purposes only. Corrected CBDV.